



March 9, 2011
 Agenda Item 9

March 9, 2011 (Agenda)

Contra Costa Local Agency Formation Commission (LAFCO)
 651 Pine Street, Sixth Floor
 Martinez, CA 94553

Status Report - Municipal Service Reviews/Sphere of Influence Updates

Dear Members of the Commission:

This is an update summarizing the status of municipal service reviews (MSRs) and sphere of influence (SOI) updates in Contra Costa County.

The Cortese-Knox-Hertzberg Local Government Reorganization Act of 2000 (CKH Act) resulted in sweeping changes to the statute that governs LAFCOs. Included among the changes was a requirement to update SOIs every five years as needed, and prepare corresponding MSRs to determine the range and adequacy of services.

DISCUSSION

MSRs/SOI Updates in Contra Costa County - In 2006, the Commission adopted a MSR work plan that provides for preparing comprehensive MSRs, using a combination of consultants and LAFCO staff to prepare the reviews. The majority of these include countywide and sub-regional reviews, with several agency-specific reviews as prepared on an as-needed basis. Many of these reviews represent “inaugural” MSRs.

Status of MSRs/SOI Updates - To date, countywide MSRs have been completed for the following services: healthcare, water/wastewater, fire/emergency medical, reclamation, cemetery, mosquito/vector control, park/recreation, and resource conservation. Also, sub-regional MSRs covering all 19 cities and several community service districts (CSDs) are complete, as well as agency-specific MSRs for the Byron Sanitary District, Town of Discovery Bay CSD, and Green Valley Recreation & Park District. In 2010, LAFCO initiated a countywide MSR covering police services. This review is expected to be complete by June 2011.

Most agency SOIs were updated in conjunction with the MSRs. The following SOI updates are pending.

Agency	MSR	Comments
Town of Danville	Central County Sub-regional MSR completed September 2009	SOI update pending completion of Town’s General Plan update
City of San Ramon	Central County Sub-regional MSR completed September 2009	SOI update pending completion of Town’s General Plan update
County Service Area (CSA) R-4	Countywide Park/Recreation Services MSR completed April 2010	SOI update deferred 12 months pending agency update
CSA R-7A	Countywide Park/Recreation Services MSR completed April 2010	SOI update pending stakeholder discussions (Round Hill)

Agency	MSR	Comments
Rollingwood Wilart Park Recreation & Park District	Countywide Park/Recreation Services MSR completed April 2010	SOI update deferred 12 months pending agency update
Contra Costa County Fire Protection District (FPD)	Countywide Fire/Emergency Medical Services MSR completed April 2009	Partial SOI update in 2009; SOI update pending west county fire service discussions (i.e., potential boundary changes)
Crockett-Carquinez FPD	Countywide Fire/Emergency Medical Services MSR completed April 2009	SOI pending west county fire service discussions
Kensington FPD	Countywide Fire/Emergency Medical Services MSR completed April 2009	SOI pending west county fire service discussions
Rodeo-Hercules FPD	Countywide Fire/Emergency Medical Services MSR completed April 2009	SOI pending west county fire service discussions
Reclamation District (RD) 2065 (Veale Tract)	Countywide Reclamation Services completed July 2009	Provisional SOI; agency report back in 12 months – see Attachment 1
RD 2121	Countywide Reclamation Services completed July 2009	SOI update deferred 24 months pending agency update

In addition to the pending SOI updates, there are several agencies whose SOIs were updated, and are required to report back to LAFCO on service/ boundary issues identified in the MSR reports, including Alamo Lafayette Cemetery District (report back in April 2011); Byron-Brentwood-Knightsen-Union Cemetery District (report back in April 2011); CSA R-9A (report back in April 2011); and Green Valley Recreation & Park District (report back in October 2011).

A complete MSR/SOI summary is attached (Attachment 2). LAFCO staff will continue to work with those agencies with pending SOIs and service/boundary issues and keep the Commission apprised of progress.

Upcoming MSRs/SOI Updates - A number of agencies are due for first or second round MSRs/SOI updates. It is recommended that in FY 2011-12, LAFCO conduct a comprehensive countywide review covering library services, including services provided by the County, cities and special districts. Also, it is recommended that in FY 2011-12, LAFCO conduct MSRs covering the following miscellaneous service CSAs:

- *CSA D-2* (drainage – Walnut Creek area)
- *CSA L-100* (street lighting – unincorporated county)
- *CSA M-1* (funding for ferry services – Bradford, Jersey and Webb Tract islands)
- *CSA M-20* (street lighting, street sweeping, and parkway maintenance - View Pointe subdivision - Rodeo)
- *CSA M-23* (geologic hazard abatement, drainage - Blackhawk/Danville/San Ramon)
- *CSA M-31* (transportation demand management program – Contra Costa Centre - Pleasant Hill area)
- *CSA T-1* (public transportation demand management services – Danville/San Ramon area)

The proposed FY 2011-12 budget includes funding to prepare the library and miscellaneous service MSRs.

RECOMMENDATION

Receive report and provide input as desired.

Sincerely,

Lou Ann Texeira
Executive Officer

Attachment 1 – Letter from RD 2065 – One Year Report Regarding Potential Boundary Expansion
Attachment 2 – Contra Costa LAFCO MSRs/SOI Updates Summary

**RECLAMATION DISTRICT NO. 2065
(VEALE TRACT)**

235 East Weber Avenue, Stockton, CA 95202

Mailing Address:

P.O. Box 1461, Stockton, California 95201-1461

Telephone: (209) 465-5883

Fax: (209) 465-3956

Trustees

Coleman Foley

Thomas E. Baldocchi, Sr.

Thomas E. Baldocchi, Jr.

Secretary and Attorney

Dante John Nomellini, Jr.

Engineer

Gilbert Cosio, Jr.

January 14, 2011

Via Email at LTexe@lafco.cccounty.us

Lou Ann Texeira, Executive Officer

Contra Costa County LAFCO

651 Pine Street, Sixth Floor

Martinez, CA 94553

Re: One Year Report re Potential Boundary Expansion.

Dear Ms. Texeira:

As you are aware, LAFCO passed the following resolution on November 18, 2009:

“Designate the existing coterminous SOI as ‘provisional’ as generally depicted on Exhibit A attached hereto, to allow RD 2065 an opportunity to explore a potential boundary expansion, to address various operational and infrastructure issues identified in the MSR report, and report back to LAFCO within 12 months.”

In connection with LAFCO’s 2009 Municipal Services Review for reclamation districts, Reclamation District No. 2065 (RD 2065) informed LAFCO that it was interested in exploring the pros and cons of annexing lands to the west of its western boundary that benefit from RD 2065’s provision of drainage services and/or provision of flood control services. Such lands are within the Knightsen Town Community Services District (KTCSD). (See attached maps.) Over the last year RD 2065 has explored such annexation and discussed the matter with KTCSD. After such exploration and discussion, the outcome was that neither RD 2065 nor KTCSD are in favor of any such annexation at this time.

RD 2065 does not support any such annexation at the present time primarily because the additional revenue RD 2065 could theoretically assess on lands that its annexes would be relatively nominal and would be substantially outweighed by the burdens and liability RD 2065

would incur as a result of such annexation. KTCSD apparently has significant drainage issues which it was essentially, and fairly recently, created to try to resolve and, because of the urban quality of that drainage, that drainage water is an entirely different animal from the agricultural drainage RD 2065 currently handles. As LAFCO is aware, urban stormwater drainage is a very complex and highly regulated matter and the costs associated with providing a long term solution for KTCSD's urban stormwater drainage, including the permitting and ongoing reporting and other requirements associated with such a solution, not to mention the physical aspects of such a solution, are costs which would far exceed the relatively nominal increase in assessments RD 2065 would receive by annexing portions of KTCSD. On top of those costs is the significantly increased liability associated with the assumption of responsibility for such a highly regulated, sensitive matter such as urban stormwater drainage.

In RD 2065's discussions of the matter with KTCSD it was clear that KTCSD was also not interested in any such annexation at this time. In general, KTCSD voiced concerns about not wanting to incur the financial burdens, debt, responsibilities or liability of RD 2065; not wanting to be assessed by RD 2065; and, for the most part, it appeared KTCSD was interested in pursuing its own solution to its drainage issues and appeared to be well on its way towards such a solution. KTCSD can of course speak for themselves. The foregoing is merely what I took away from RD 2065's discussions with them about the matter.

RD 2065 is concerned about the levee sections to the west of its westernmost boundary. (See circled areas on the attached map.) Discussions with KTCSD to date have not focused on that topic, however, RD 2065 intends to entertain such discussions and ensure that KTCSD or some other entity or person is indeed taking responsibility for, and regularly carrying out, the operation, maintenance and rehabilitation of those levee sections because a breach of those levees would presumably flood the lands within RD 2065. Those sections are within the KTCSD's boundary, and pursuant to the final Municipal Services Review report for KTCSD, adopted December 10, 2008, the KTCSD "is authorized to provide only flood control and water quality (drainage services)[;] The District is not actively providing these types of services at this time, but is in the planning stages to do so." (*Id.*, p. IX-1.)

Because RD 2065 is currently operating, maintaining and rehabilitating many miles of levees which protect a significant amount of land within KTCSD's from flooding at no financial cost to KTCSD, it would appear equitable for KTCSD to undertake, or assist with, the operation, maintenance and rehabilitation of that relatively small stretch of levees within their boundaries and outside of RD 2065's boundaries. Again, RD 2065 intends to have discussions with KTCSD regarding this matter.

Since neither RD 2065 nor KTCSD are currently interested in RD 2065 annexing any land within KTCSD, it appears there is no reason to change RD 2065's sphere of interest at this time. That is, of course, not to say matters could not change in the future so as to make such annexation more palatable to RD 2065 or KTCSD, or both. But between now and the next Municipal Services Review (which will be approximately four years from now), RD 2065 does

not anticipate any such annexation and, as noted, does not currently support or desire any such annexation.

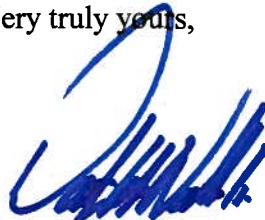
Government Code section 56133, subdivision (a), provides:

“A city or district may provide new or extended services by contract or agreement outside its jurisdictional boundaries only if it first requests and receives written approval from the commission in the affected county.”

This subdivision would apparently allow RD 2065 and KTCSD, or any other agencies, to reach an agreement in terms of the operation, maintenance and rehabilitation of the above-described stretches of levee that are outside RD 2065’s boundaries, and such agreements would apparently not require RD 2065, nor any other agency, to expand their spheres of influence or annex any lands. Accordingly, this subdivision provides a vehicle and opportunity for RD 2065 and KTCSD, or other agencies, to cooperatively work together should it become advisable to do so to address said levees, or any other common concern, without the need for any formal sphere of influence or boundary change.

RD 2065 greatly appreciates the additional time LAFCO has afforded it to give further consideration to the potential annexation of lands and, hence, to the potential expansion of its sphere of influence. As a result of that consideration, and for the foregoing reasons, RD 2065 hereby respectfully requests that its sphere of influence not be changed at this time and that LAFCO continue to officially recognize that sphere of influence as being coterminous with its current boundaries.

Very truly yours,

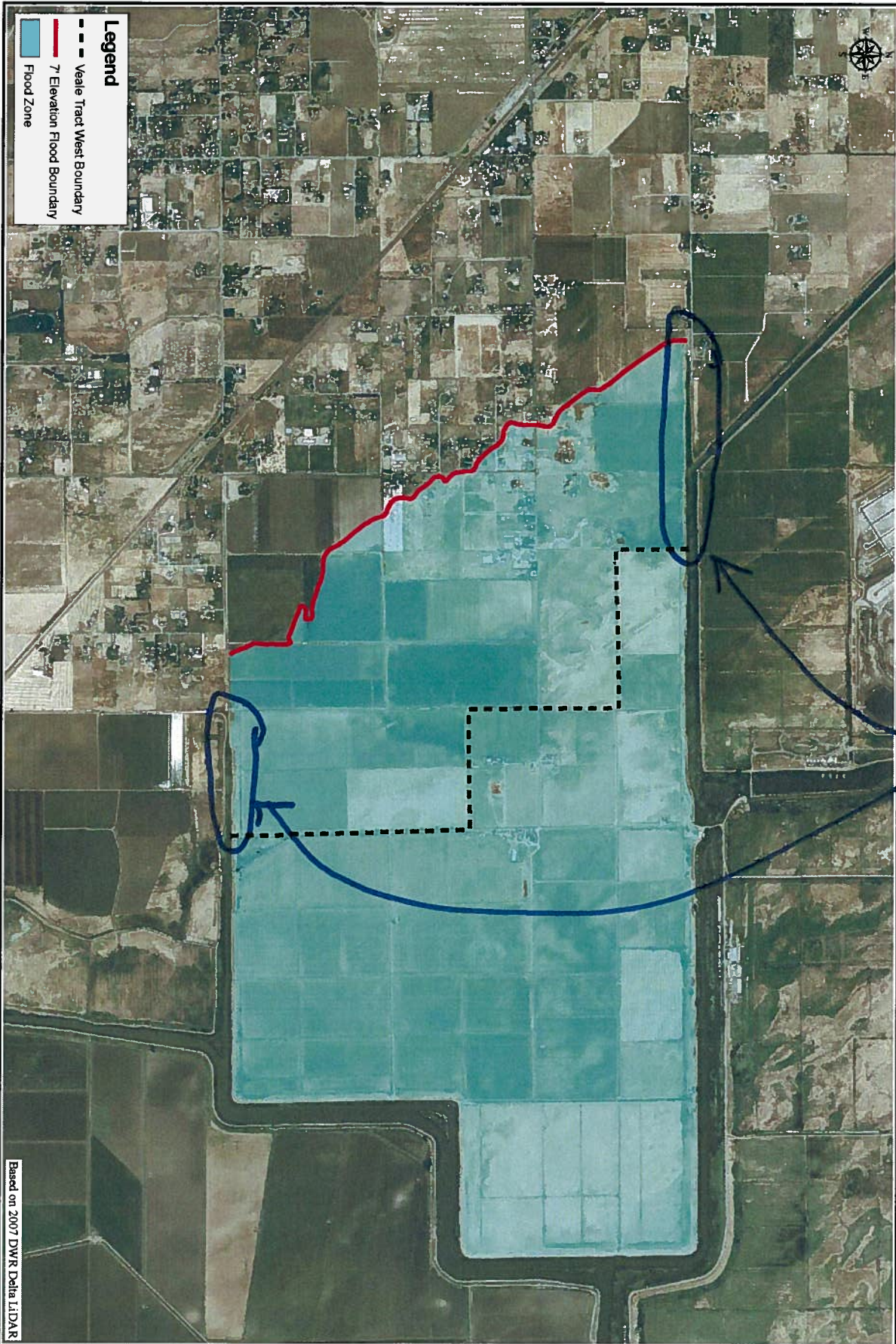


Dante John Nomellini, Jr.
Secretary and Attorney for RD 2065

DJR/djr

Enclosures

cc: RD 2065 Trustees
RD 2065 Engineers, MBK Engineers (via email)
KTCSD, c/o Linda Weekes, Chairperson (via email)



Based on 2007 DWR Delta LIDAR

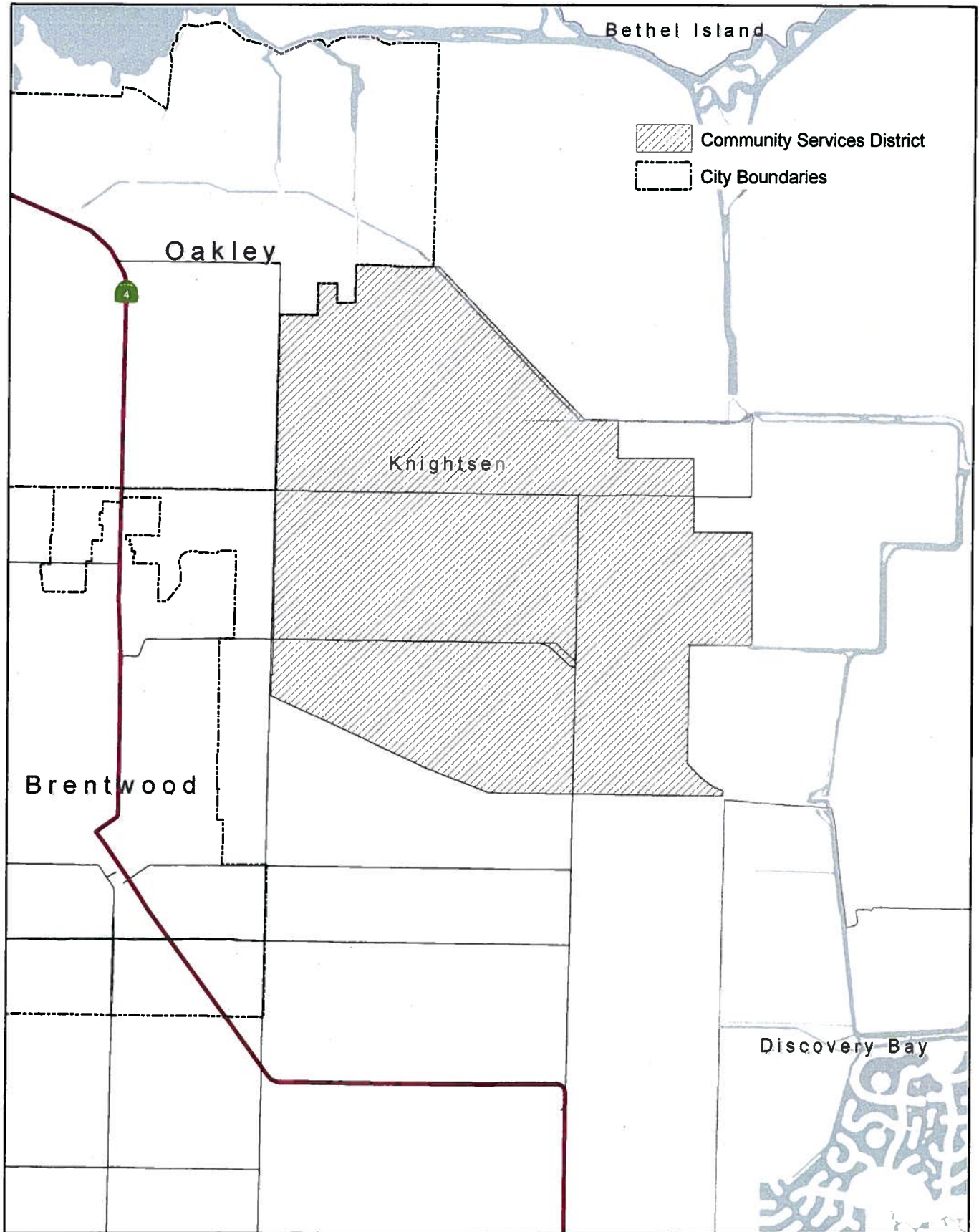
MBK
ENGINEERS
2450 Alhambra Blvd
Sacramento, CA 95817
Phone: 916-456-4400 Fax: 916-456-0253
www.mbkengineers.com

Reclamation District No. 2065 - Veale Tract

7' Elevation Flood Zone

Scale: 1 inch = 1,500 feet	SHEET
Client: 4500.10	1
Date: MAY 2009	OF
Drawn By: NWV	1
Requested By: GC	SHEETS
0 1,500	
Scale in Feet	

Knightsen Community Services District



Map created 8/28/2006
by Contra Costa County Community Development, GIS Group
651 Pine Street, 4th Floor North Wing, Martinez, CA 94553-0095
37:59:48.455N 122:06:35.394W

This map was created by the Contra Costa County Community Development Department with data from the Contra Costa County GIS Program. Some base data, primarily City Limits, is derived from the CA State Board of Equalization's tax rate areas. While obligated to use this data the County assumes no responsibility for its accuracy. This map contains copyrighted information and may not be altered. It may be reproduced in its current state if the source is cited. Users of this map agree to read and accept the County of Contra Costa disclaimer of liability for geographic information.

0 0.25 0.5 1 Miles



CONTRA COSTA LAFCO

Status of Municipal Service Reviews/Sphere of Influence Updates March 2011

Local Agency	MSR/SOI Status	Type of MSR	Next Update
<u>Cities</u> City of Antioch	MSR (Dec 2008); SOI <i>reduced</i> (Mar 2010)	East County Sub-Regional MSR	2013-14
City of Brentwood	MSR/SOI <i>reduced</i> (Dec 2008)	East County Sub-Regional MSR	2013-14
City of Clayton	MSR (Sept 2009); SOI <i>reduced</i> (Oct 2009)	Central County Sub-Regional MSR	2014-15
City of Concord	MSR (Sept 2009); SOI retained (Oct 2009)	Central County Sub-Regional MSR	2014-15
Town of Danville	MSR (Sept 2009); SOI update pending	Central County Sub-Regional MSR	2014-15
City of El Cerrito	MSR/SOI <i>retained</i> (Nov 2009)	West County Sub-Regional MSR	2014-15
City of Hercules	MSR/SOI <i>retained</i> (Nov 2009)	West County Sub-Regional MSR	2014-15
City of Lafayette	MSR (Sept 2009); SOI <i>retained</i> (Oct 2009)	Central County Sub-Regional MSR	2014-15
City of Martinez	MSR (Sept 2009); SOI <i>reduced</i> (Oct 2009)	Central County Sub-Regional MSR	2014-15
Town of Moraga	MSR (Sept 2009); SOI <i>reduced</i> (Oct 2009)	Central County Sub-Regional MSR	2014-15
City of Oakley	MSR/SOI <i>retained</i> (Dec 2008)	East County Sub-Regional MSR	2013-14
City of Orinda	MSR (Sept 2009); SOI <i>retained</i> (Oct 2009)	Central County Sub-Regional MSR	2014-15
City of Pinole	MSR/SOI <i>retained</i> Nov 2009	West County Sub-Regional MSR	2014-15
City of Pittsburg	MSR (Dec 2008); SOI <i>expanded</i> (July 2009)	East County Sub-Regional MSR	2013-14
City of Pleasant Hill	MSR (Sept 2009); SOI <i>reduced</i> (Oct 2009)	Central County Sub-Regional MSR	2014-15
City of Richmond	MSR/SOI <i>reduced</i> (Nov 2009)	West County Sub-Regional MSR	2014-15
City of San Pablo	MSR/SOI <i>reduced/expanded</i> (Nov 2009)	West County Sub-Regional MSR	2014-15
City of San Ramon	MSR (Sept 2009); SOI update pending	Central County Sub-Regional MSR	2014-15
City of Walnut Creek	MSR (Sept 2009); SOI <i>reduced</i> (Oct 2009)	Central County Sub-Regional MSR	2014-15
<u>Cemetery Districts</u> Alamo-Lafayette Cemetery District	MSR/SOI <i>retained</i> (Apr 2010)	Countywide Cemetery, Park & Recreation	2015 (report back 2011)
Byron-Brentwood-Knightsen-Union Cemetery District	MSR/SOI <i>retained</i> (Apr 2010)	Countywide, Cemetery, Park & Recreation	2015 (report back 2011)

Local Agency	MSR/SOI Status	Type of MSR	Next Update
<u>Community Service Districts</u> Crockett CSD (formed 2006)	MSR/SOI <i>retained</i> (Nov 2009)	West County Sub-Regional MSR	2012-14 (county-wide water/sewer)
Diablo CSD	MSR (Sept 2009); SOI <i>retained</i> (Oct 2009)	Central County Sub-Regional MSR	2014-15
Dublin San Ramon CSD	N/A	Alameda LAFCO is principal	
Kensington Police Protection and CSD	MSR/SOI retained (Nov 2009)	West County Sub-Regional MSR	2014-15
Town of Discovery Bay CSD	MSR/SOI <i>retained</i> (May 2006)	Agency-specific MSR	2012-14 (county-wide water/sewer)
Town of Knightsen CSD (formed 2005)	MSR/SOI <i>retained</i> (Dec 2008)	East County Sub-Regional MSR	2012-14 (county-wide water/sewer)
<u>County Service Areas</u> CSA D-2 (Drainage - Walnut Creek)	MSR May 2004; no SOI update		2011-12
CSA EM-1 (Countywide – Emergency Medical)	MSR (Aug 2009); SOI <i>retained</i> (Oct 2009)	Countywide Fire/ Emergency Service MSR	2014-15
CSA L-100 (Countywide - Streetlighting)	No previous MSR; SOI <i>affirmed</i> Nov 2003		2011-12
CSA LIB-2 (Library - Rancho El Sobrante)	MSR/SOI <i>affirmed</i> Feb 04		2011-12
CSA LIB-10 (Library - City of Pinole)	MSR/SOI <i>affirmed</i> Feb 04		2011-12
CSA LIB-12 (Library - Town of Moraga)	MSR/SOI <i>affirmed</i> Feb 04		2011-12
CSA LIB-13 (Library - cities of Concord and Walnut Creek)	MSR/SOI <i>affirmed</i> Feb 04		2011-12
CSA M-1 (Misc Services - Delta Ferry)	MSR/SOI <i>affirmed</i> Feb 04		2011-12
CSA M-16 (Misc Services – Community of Clyde)	MSR/SOI <i>retained</i> (Apr 2010)	Countywide Park & Rec	2015
CSA M-17 (Misc Services - Tara Hills, Montlvin Manor, West Contra Costa)	MSR/SOI <i>retained</i> (Apr 2010)	Countywide Park & Rec	2015
CSA M-20 (Misc Services - View Pointe Subdivision)	MSR/SOI <i>affirmed</i> Feb 04		2011-12
CSA M-23 (Misc Services - San Ramon, Blackhawk, Danville)	MSR/SOI <i>affirmed</i> Feb 04		2011-12
CSA M-28 (Misc Services – Bethel Island)	MSR/SOI Update (zero SOI) Dec 2007	Countywide Water/ Wastewater MSR	2012-14 (county-wide water/sewer)
CSA M-29 (Misc Services – San Ramon, Dougherty Valley)	MSR/SOI <i>retained</i> (Apr 2010)	Countywide Park & Rec	2015
CSA M-30 (Misc Services – Alamo)	MSR (Apr 2010); SOI <i>affirmed</i> (Aug 2010)	Countywide Park & Rec	2015
CSA M-31 (Misc Services – Pleasant Hill)	MSR/SOI <i>affirmed</i> (Feb 04)		2011-12
CSA P-2 (Police – Zone A – Blackhawk, Zone B - Alamo)	No previous MSR/SOI update		2010-11
CSA P-5 (Police Protection – Roundhill)	No previous MSR/SOI update		2010-11

Local Agency	MSR/SOI Status	Type of MSR	Next Update
CSA P-6 (Police Protection – Unincorporated Area)	No previous MSR/SOI update		2010-11
CSA R-4 (Recreation – Moraga)	MSR (Apr 2010); SOI update deferred 12 months	Countywide Park & Rec	2015
CSA R-7A (Recreation – Alamo)	MSR (Apr 2010); SOI update pending	Countywide Park & Rec	2015
CSA R-9A (Recreation - El Sobrante)	MSR/SOI <i>retained</i> (Apr 2010)	Countywide Park & Rec	2015 (2011 report back)
CSA R-10 (Recreation – Rodeo)	MSR/SOI <i>retained</i> (Apr 2010)	Countywide Park & Rec	2015
CSA RD-4 (Roads - Bethel Island)	MSR/SOI <i>retained</i> (Dec 2008)	East County Sub-Regional MSR	2013-14
CSA T-1 (Transit – San Ramon) (formed 2006)			2011-12
<u>Fire Service</u> Contra Costa County Fire Protection District	MSR (Aug 2009); SOI <i>expanded/reduced</i> (Oct 2009)	Countywide Fire/ Emergency Service MSR	2014-15
Crockett-Carquinez Fire Protection District	MSR (Aug 2009); SOI update pending	Countywide Fire/ Emergency Service MSR	2014-15
East Contra Costa Fire Protection District	MSR (Aug 2009); SOI <i>reduced</i> (Oct 2009)	Countywide Fire/ Emergency Service MSR	2014-15
Kensington Fire Protection District	MSR (Aug 2009); SOI update pending	Countywide Fire/ Emergency Service MSR	2014-15
Moraga-Orinda Fire Protection District	MSR (Aug 2009); SOI <i>expanded</i> (Oct 2009)	Countywide Fire/ Emergency Service MSR	2014-15
Rodeo-Hercules Fire Protection District	MSR (Aug 2009); SOI update pending	Countywide Fire/ Emergency Service MSR	2014-15
San Ramon Valley Fire Protection District	MSR (Aug 2009); SOI <i>expanded</i> (Oct 2009)	Countywide Fire/ Emergency Service MSR	2014-15
<u>Health Care Districts (HCDs)</u> Los Medanos HCD	MSR/SOI <i>retained</i> (Aug 2007)	Countywide healthcare MSR	2012-13
Mt. Diablo HCD	MSR/SOI <i>retained</i> (Aug 2007)	Countywide healthcare MSR; annual progress report required/provided	2012-13
West Contra Costa HCD	MSR/SOI <i>retained</i> (Aug 2007)	Countywide healthcare MSR; annual progress report required/provided	2012-13
<u>Irrigation</u> Byron-Bethany Irrigation District	N/A	San Joaquin LAFCo is principal	
East Contra Costa Irrigation District	MSR (Dec 2007); SOI <i>retained</i> (Mar 2008)	Countywide Water/ Wastewater MSR	2012-14
<u>Mosquito Abatement</u> Contra Costa Mosquito and Vector Control District	MSR (Apr 2010); SOI <i>retained</i> (May 2010)	Countywide	2015
<u>Municipal Improvement</u> Bethel Island Municipal Improvement District	MSR/SOI <i>retained</i> (Dec 2008)	East County Sub-Regional MSR	2014-15 (with RDs)

Local Agency	MSR/SOI Status	Type of MSR	Next Update
<u>Municipal Utility</u> East Bay MUD	N/A	Alameda LAFCo is principal	
<u>Reclamation Districts (RD)</u> RD 799 (Hotchkiss Tract)	MSR (July 2009); SOI <i>reduced</i> (Nov 2009)	Countywide Reclamation MSR	2014-15
RD 800 (Byron Tract)	MSR (July 2009); SOI <i>expanded/reduced</i> (Nov 2009)	Countywide Reclamation MSR	2014-15
RD 830 (Jersey Island)	MSR (July 2009); SOI <i>retained</i> (Nov 2009)	Countywide Reclamation MSR	2014-15
RD 2024 (Orwood and Palm Tracts)	MSR (July 2009); SOI <i>retained</i> (Nov 2009)	Countywide Reclamation MSR	2014-15
RD 2025 (Holland Tract)	MSR (July 2009); SOI <i>retained</i> (Nov 2009)	Countywide Reclamation MSR	2014-15
RD 2026 (Webb Tract)	MSR (July 2009); SOI <i>retained</i> (Nov 2009)	Countywide Reclamation MSR	2014-15
RD 2059 (Bradford Island)	MSR (July 2009); SOI <i>retained</i> (Nov 2009)	Countywide Reclamation MSR	2014-15
RD 2065 (Veale Tract)	MSR (July 2009); SOI <i>retained</i> as "provisional" with 12-month report back (Nov 2009)	Countywide Reclamation MSR	2014-15
RD 2090 (Quimby Island)	MSR (July 2009); SOI <i>retained</i> (Nov 2009)	Countywide Reclamation MSR	2014-15
RD 2117 (Coney Island)	MSR (July 2009); SOI <i>retained</i> (Nov 2009)	Countywide Reclamation MSR	2014-15
RD 2121	MSR (July 2009); SOI <i>retained</i> with 24-month report back (Nov 2009)	Countywide Reclamation MSR	2014-15
RD 2122 (Winter Island)	MSR (July 2009); SOI <i>retained</i> (Nov 2009)	Countywide Reclamation MSR	2014-15
RD 2137	MSR (July 2009); adopted zero SOI (Nov 2009)	Countywide Reclamation MSR	2014-15
<u>Park & Recreation</u> Ambrose Recreation & Park District	MSR (Apr 2010); SOI <i>retained</i> (May 2010)	Countywide	2015
East Bay Regional Park District	N/A	Alameda LAFCo is principal	
Green Valley Recreation & Park District	MSR (Aug 2008); SOI <i>reduced</i> (Oct 2009)	Agency-specific MSR	2013-14 (report back Oct 2011)
Pleasant Hill Recreation & Park District	MSR (Apr 2010); SOI <i>expanded/reduced</i> (May 2010)	Countywide	2015
Rollingwood-Wilart Recreation & Park District	MSR (Apr 2010); SOI update deferred 12 months	Countywide	2015
<u>Resource Conservation</u> Contra Costa Resource Conservation District	MSR (Apr 2010); SOI <i>retained</i> (May 2010)	Countywide	2015

Local Agency	MSR/SOI Status	Type of MSR	Next Update
<u>Wastewater</u> Byron Sanitary District	MSR/SOI <i>retained</i> (May 2006)	Agency-specific MSR	2012-14 (county-wide water/sewer)
Central Contra Costa Sanitary District	MSR Apr 2008; SOI <i>reduced</i> (June 2008)	Countywide Water/Wastewater MSR	2012-14
County Sanitation District 6 (Alhambra Valley)	MSR/SOI update (zero SOI) Apr 2008	Countywide Water/Wastewater MSR	2012-14
Delta Diablo Sanitary District	MSR Dec 2007; SOI <i>expanded</i> (July 2009)	Countywide Water/Wastewater MSR	2012-14
Ironhouse Sanitary District	MSR/SOI <i>reduced</i> (Dec 2007)	Countywide Water/Wastewater MSR	2012-14
Mt. View Sanitary District	MSR/SOI <i>retained</i> (Apr 2008)	Countywide Water/Wastewater MSR	2012-14
Rodeo Sanitary District	MSR/SOI <i>retained</i> (Aug 2008)	Countywide Water/Wastewater MSR	2012-14
Stege Sanitary District	MSR/SOI <i>retained</i> (Aug 2008)	Countywide Water/Wastewater MSR	2012-14
West County Wastewater District	MSR/SOI <i>retained</i> (Aug 2008)	Countywide Water/Wastewater MSR	2012-14
<u>Water</u> Contra Costa Water District	MSR Apr 2008; SOI <i>expanded</i> (July 2009)	Countywide Water/Wastewater MSR	2012-14
Diablo Water District	MSR/SOI <i>reduced</i> (Dec 2007)	Countywide Water/Wastewater MSR	2012-14